



# **The role of voluntary conservation on private lands**

**John Williams  
Commissioner  
Natural Resources Commission, NSW**

*6 May 2011*

**There is grandeur in this view of life ... that, whilst this planet has gone cycling on according to the fixed law of gravity, from so simple a beginning endless forms most beautiful and most wonderful have been, and are being, evolved.**

Charles Darwin,  
Origin of the Species, 1859



# RESILIENT LANDSCAPES AND COMMUNITIES

MANAGING NATURAL RESOURCES  
IN NEW SOUTH WALES



Unless we value environmental  
assets and their ecological  
function on *private land* we shall  
lose them.

This standard defines the required levels of quality for  
seven components of natural resource management:

- Collection and use of knowledge
- Determination of scale
- Opportunities for collaboration
- Community engagement
- Risk management



Resilient landscapes  
requires integrated  
management of all land  
water and biodiversity  
regardless of tenure









## Biodiversity

- 1 By 2015 there is an increase in native vegetation extent and an improvement in native vegetation condition.
- 2 By 2015 there is an increase in the number of sustainable populations of a range of native fauna species.
- 3 By 2015 there is an increase in the recovery of threatened species, populations and ecological communities.
- 4 By 2015 there is a reduction in the impact of invasive species.

## Water

- 5 By 2015 there is an improvement in the condition of riverine ecosystems.
- 6 By 2015 there is an improvement in the ability of groundwater systems to support groundwater-dependent ecosystems and designated beneficial uses.
- 7 By 2015 there is no decline in the condition of marine waters and ecosystems.
- 8 By 2015 there is an improvement in the condition of important wetlands, and the extent of those wetlands is maintained.
- 9 By 2015 there is an improvement in the condition of estuaries and coastal lake ecosystems.

## Land

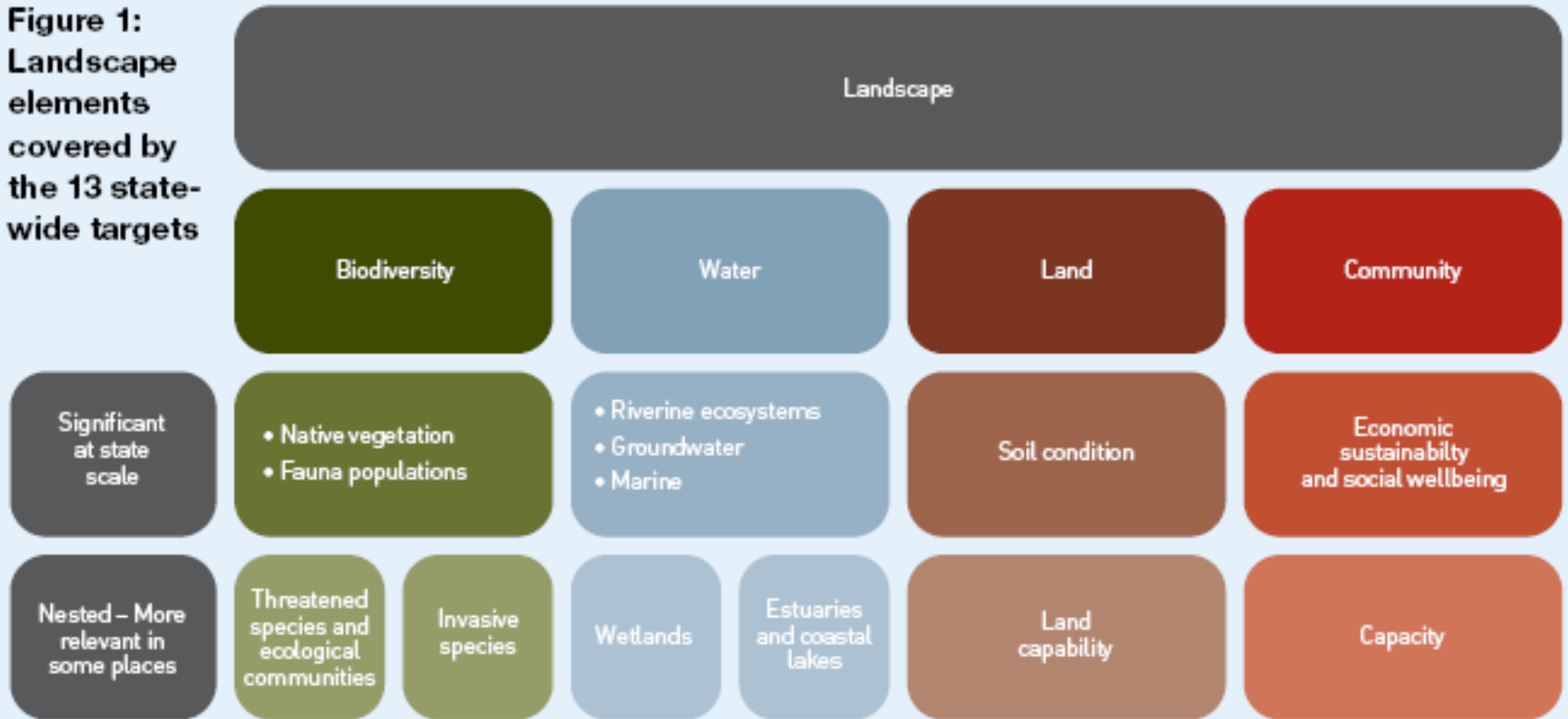
- 10 By 2015 there is an improvement in soil condition.
- 11 By 2015 there is an increase in the area of land that is managed within its capability.

## Community

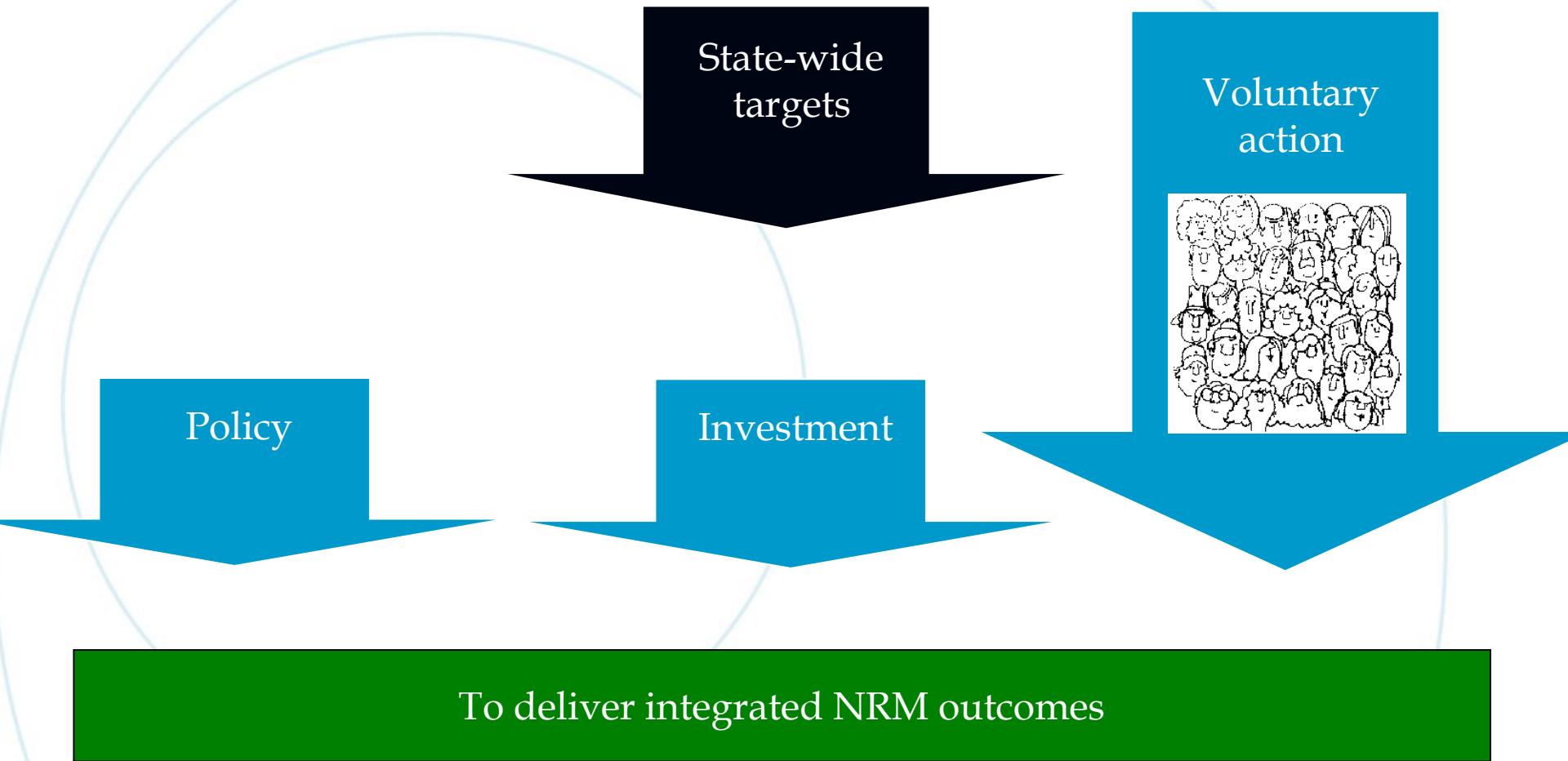
- 12 Natural resource decisions contribute to improving or maintaining economic sustainability and social wellbeing.
- 13 There is an increase in the capacity of natural resource managers to contribute to regionally relevant natural resource management.



**Figure 1:  
Landscape  
elements  
covered by  
the 13 state-  
wide targets**



# Prioritising Conservation



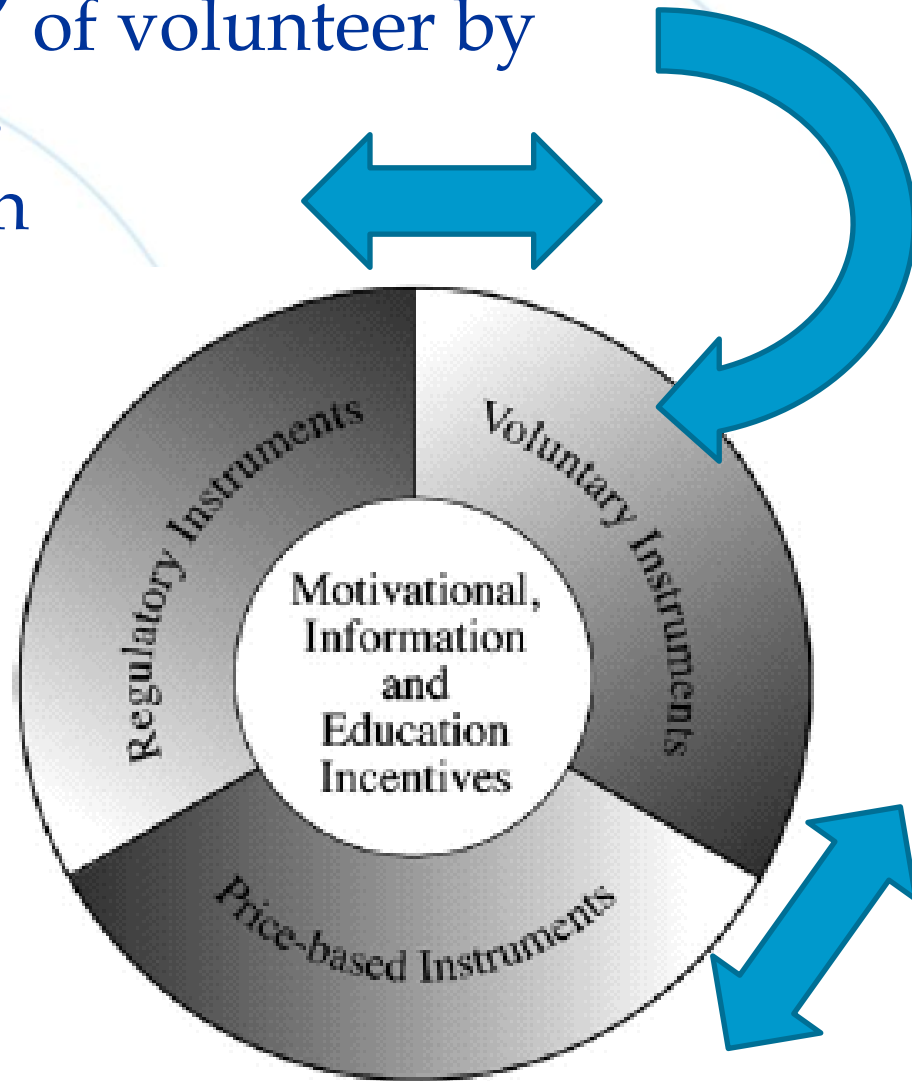
# Land for Wildlife-some issues

- Indigenous Protected Areas
- Importance of indigenous country



# Land for Wildlife-some issues

- “Crowding out” of volunteer by
  - Incentives
  - Regulation

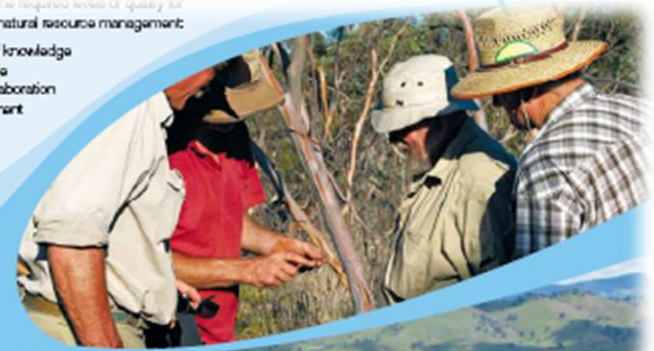


# Land for Wildlife-some issues

- CMA engagement-Land for Wildlife  
.....opens the door.

The standard defines the required levels of quality for seven components of natural resource management:

- Collection and use of knowledge
- Determination of scale
- Opportunities for collaboration
- Community engagement
- Risk management



# Conservation on Private Land a key link in the chain

- 70%+ land privately owned
- NRM knows no boundaries
- Does not have to affect property rights (eg Land for Wildlife)
- Flexible; can run alongside existing landuses
- Most simple form of conservation

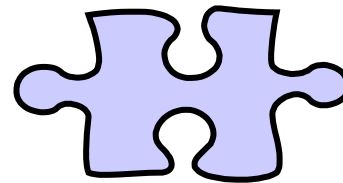
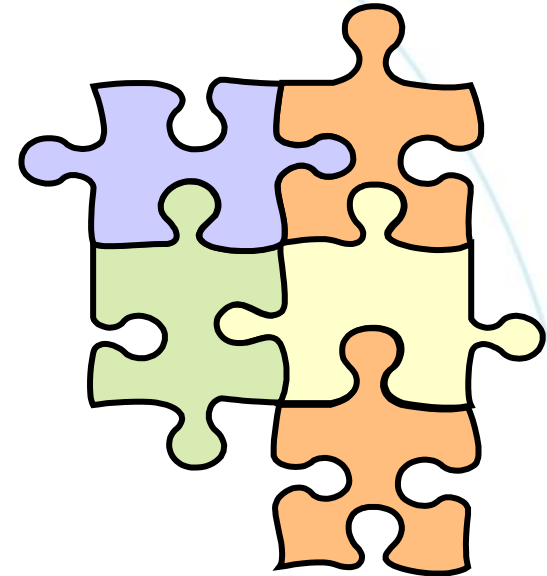
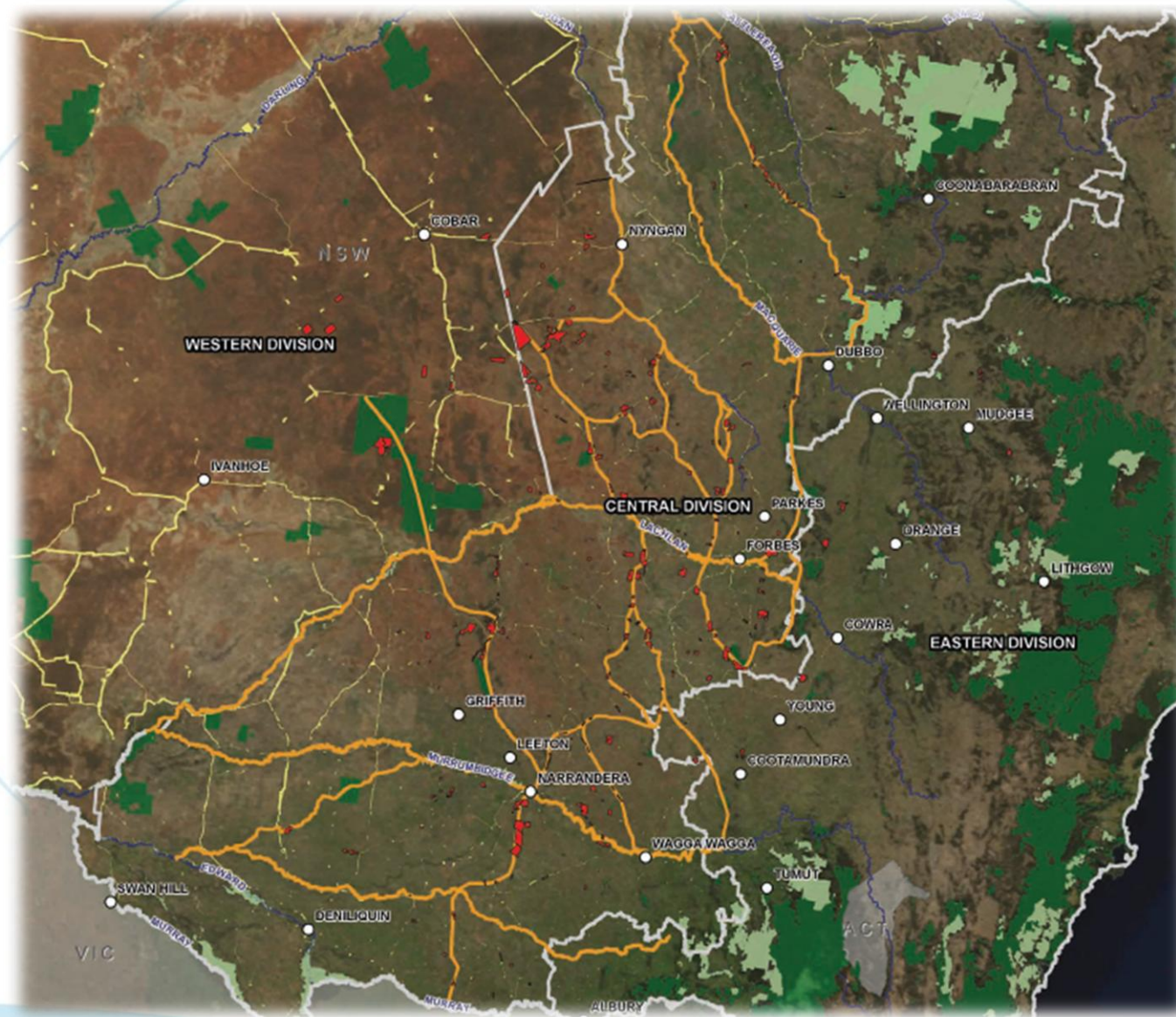
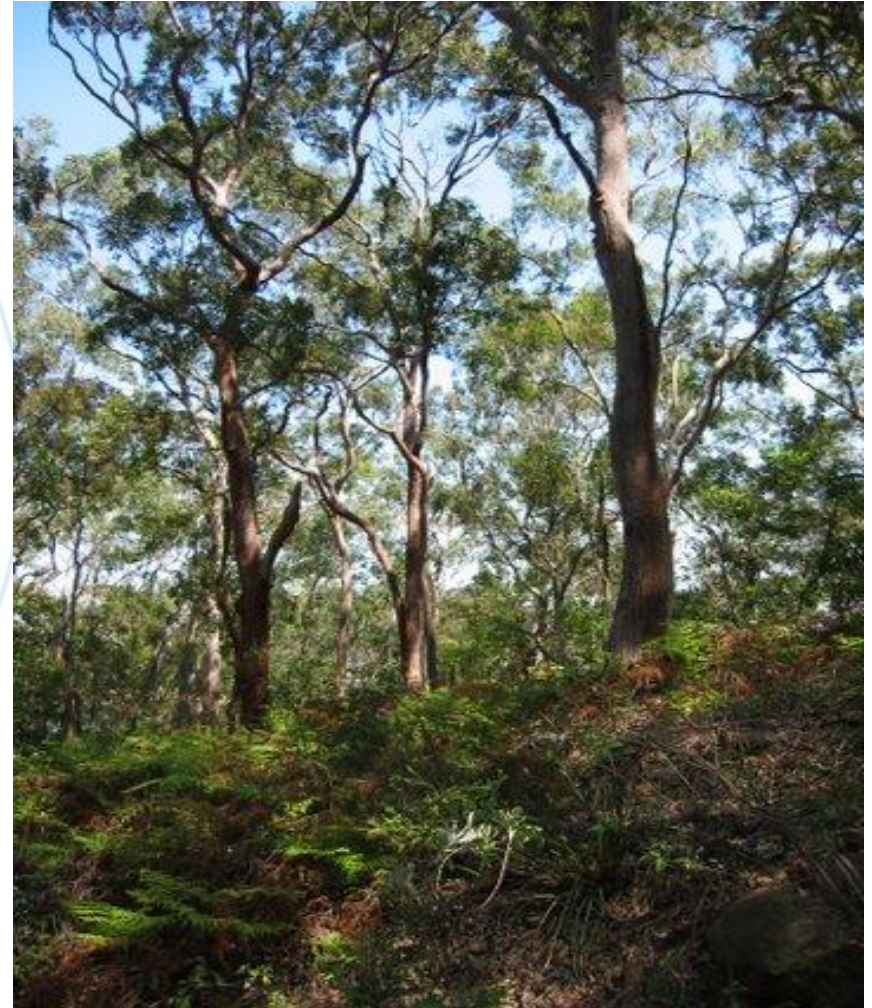


Figure 6.3: Potential corridors linking major areas of refuge in the white cypress landscape. Methodology is explained in Appendix 11.



# Private Land Conservation A call to Action

- Critical work
- Must be acknowledged
- Requires effort from everyone
- Special skills to make it work







# Land Protected For Wildlife



courtesy Dr Mary White at Fall Forrest Retreat



**courtesy Dr Mary White at Fall Forrest Retreat**



2000ha Incentive PVP  
Upper Hunter





**Previously declared extinct**